



# RG-SERIES

Reliable, service-friendly and extremely strong. The Rotar Demo Grab has been proven to be the perfect tool for industrial demolition and high production recycling applications.

The RG Series is fitted with a robust rotating upper head, that includes a heavy-duty double rowed slewing ring. The dual hydraulic motors in the upper head generate improved stability, which is suited for heavy loading in any position.

**Upper head  
and  
Rotation  
System**

The hydraulic cylinder of the RG Series are all fitted with a direct mounted load control valve which protects against unexpected movement of the shells. Additionally, the cylinder has an extra-long stroke, to close the shells even when the edges are worn out.

**Hydraulic  
Cylinder**

The RG Series' shells are made of HARDOX steel and equipped with bolt on replaceable and rotatable cutting edges. Pivot points of the double-walled construction body have hardened, oversized pins for increased support. This design lowers the overall tension in the construction, thereby extending the RG's durability.

**Wear-Resistant  
Shells  
Pivot Points**

**RIDE  
WITH  
US**

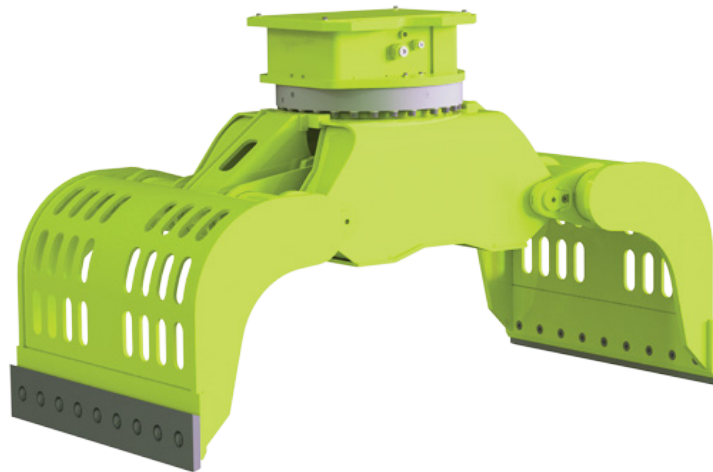




# Specifications

The RG Series Demo Grab comes standard with perforated shells. Optional closed, or rib shells are available.

DEMO  
MOUNTING  
OPTIONS



SCRAP  
MOUNTING  
OPTION

Specification	Unit	RG-SERIES				
		5-N	9-N	12-N	15-N	22-N
Capacity	CuYd / liter	0.13 / 100	0.18 / 140	0.43 / 325	0.52 / 400	0.62 / 530
Carrier Weight / Stick	ton <sup>^</sup>	2-5	5-9	10-15	14-18	16-22
Weight	lbs	463	959	1,984	2,237	2,976
Opening Max	Inch	44.8	53.1	68.9	72.0	79.1
Hydraulic Flow Max.	gpm	9	13	21	21	26
Operating Press Max.	psi	4,640	4,640	4,640	4,640	5,075

Specification	Unit	RG-SERIES				
		30-N	40-N	50-N	55-N	60-N
Capacity	CuYd / liter	0.81 / 620	1.15 / 875	1.44 / 1100	1.70 / 1300	1.96 / 1500
Carrier Weight / Stick	ton <sup>^</sup>	20-30	25-40	35-50	45-55	50-70
Weight	lbs	3,527	4,850	5,181	7,275	8,708
Opening Max	Inch	86.6	95.7	95.7	110.2	120.0
Hydraulic Flow Max.	gpm	26	31	31	40-53	53
Operating Press Max.	psi	5,075	5,075	5,075	5,511	5,075

<sup>^</sup>metric ton