



# RDP-SERIES

The RDP-Series produces enormous power and is designed for concrete crushing and secondary processing work that other tools cannot handle.

Rotar's hydraulic speed valve allows the jaws to close quickly and automatically switches from speed to power mode as soon as the job requires. The Trunnion mounted hydraulic cylinder ensures optimum power attack angle on the material. This compact design ensures a favorable balance of the tools center of gravity.

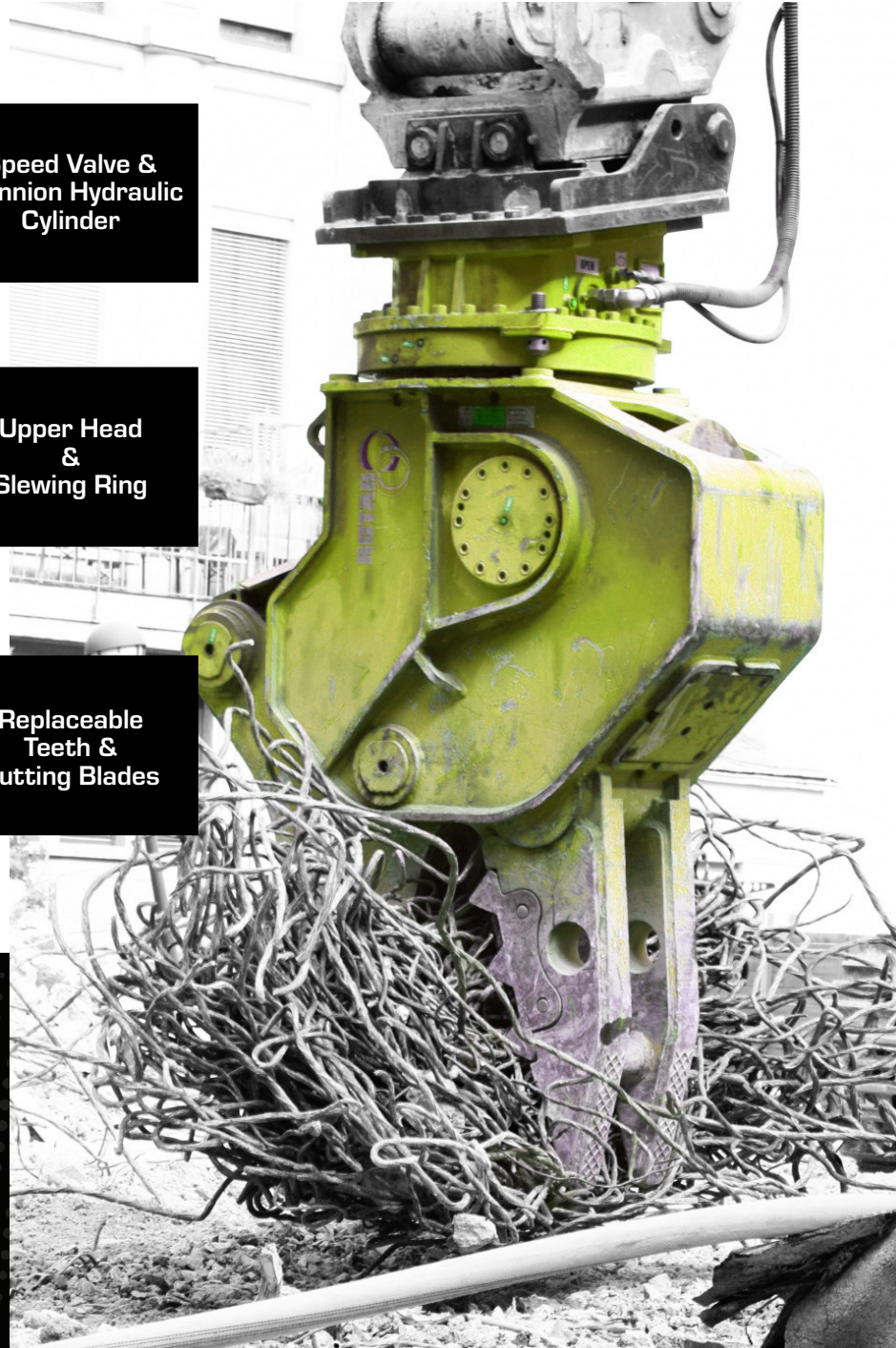
**Speed Valve & Trunnion Hydraulic Cylinder**

The RDP Series is fitted with a robust rotating upper head, that includes a heavy-duty double rowed slewing ring. The dual hydraulic motors in the upper head generate improved stability, which is suited for heavy loading in any position.

**Upper Head & Slewing Ring**

The RDP Series is fitted with replaceable and interchangeable cutting teeth. That are designed to fracture and downsize the concrete with ease. The RDP is also fitted with rebar and steel cutting blades in the throat. The RDP's body is made from high-strength wear-resistant materials, making it extremely strong and durable.

**Replaceable Teeth & Cutting Blades**

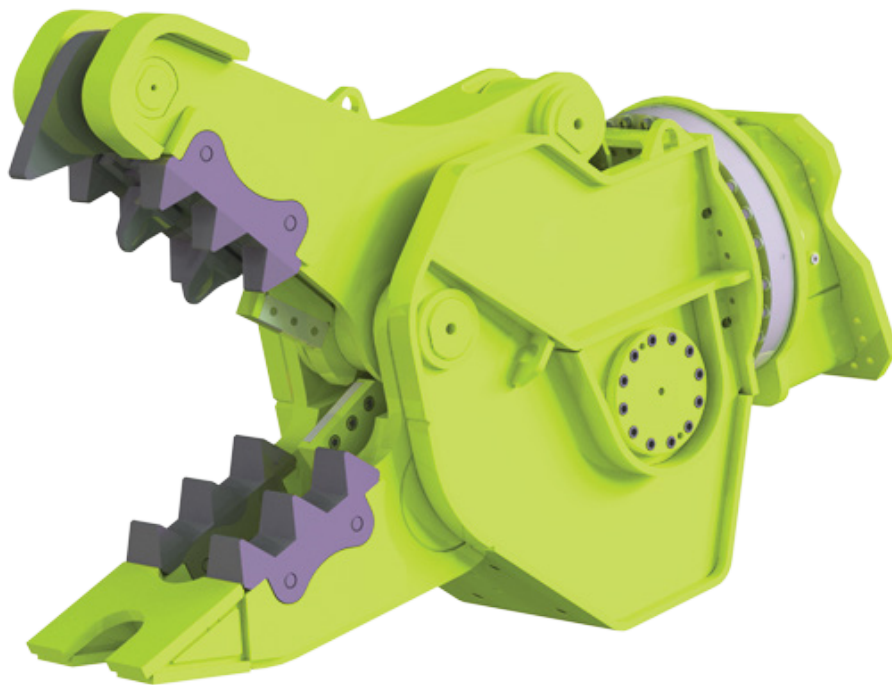


**RIDE  
WITH  
US**



# Specifications

The RDP-Series works its way through any concrete project with ease by incorporating its features of a high pressure cylinder and durable replaceable and interchangeable wear parts.



Specification	Unit	RDP-SERIES			
		20 R	25 R	32 R	42 R
Force @ Mid-Jaw	ton	100	107	152	195
Carrier Weight / Stick	ton <sup>^</sup>	15-25	22-35	32-50	45-70
Weight	lbs	4,629	6,095	6,834	9,920
O.A.L.	in	83	89	96	104
Opening Max.	in	35	41	43	50
Hydraulic Flow Max.	gpm	66	66	80	92
Operating Press Max.	psi	5,075	5,075	5,075	5,075

<sup>^</sup>metric ton